



OGI PORTABLE CAMERA GASVIEWER GV-P-714

To see gas leaks invisible to the naked eyes. For fugitive emissions detection, localization, visualization and quantification (optional). Gases « appear » in real time as fumes on the attached windows tablet screen. Approved as Smart LDAR Equipment in EPA, method 21 and EN15446 regulations. Safe for hazardous areas.

OGI CAMERA GV-P 714 FOR CH₄, SO₂ and VOC's detection

OGI (Optical Gas Imaging) camera is vital in keeping your employees, your site, and the environment safe. Our GV-P-714 saves time in the search for fugitive gas leaks and provides confidence that the inspected equipment is free from leaks of CH₄, SO₂ and VOCs (list of gases in the datasheet).

Gas detection camera is ideal for facilities that are sensitive to gas emission such as refineries, petrochemical plants, tank farms, fertilizer plants, power plants... It can detect small and big leaks, leaks from distance, leaks under insulation, underground leaks, unexpected leaks...

ACCURACY

Uncooled detector technology allows to find leaks as low as 1.4 gr/hr for CH₄ at 2 m distance.

CAMERA MODES

- Color
- Infra-red
- Enhanced gas detection
- Thermography

RECORDING

Record your leaks picture or video on the attached tablet 256 GB hard drive. Then, download the videos through Wifi to your computer.

BUILT-IN FUNCTIONS

- Thermography
- Colorization of the leaking gas
- Estimation of the leaking rate

SAFETY CERTIFICATIONS

- Camera : Atex II B 3G Ex NA II B Gc
- Tablet : Atex II 3G Ex ic IIC T4 Gc
- IP 65 for the camera and tablet

— Very low operating cost due to its uncooled technology.



◀ Figure 1

Quantification

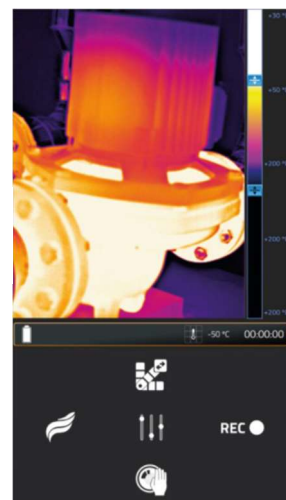


Figure 2 ▶

Thermography

CONTACT:

+33 4 65 260 760

contact@og-tech.fr

DATA SHEET

FUNCTIONALITIES	
APPLICATION	GAS DETECTION
ADDITIONAL APPLICATIONS	GAS DETECTION GAS CLOUD COLORIZATION (OPTIONAL) GAS LEAK FLOW RATE (OPTIONAL)
CAMERA TYPE	PORTABLE for on-the-spot surveys
GAS LEAK DETECTION PERFORMANCE	
GAS DETECTED	CH ₄ , SO ₂ and VOC's
MIN. LEAK RATE	1.4 gr/hour for CH ₄ at 2m
ACCURACY	±1°C (from -10°C to +60°C)
STORAGE	
STORAGE CAPACITY	256 GB SD Drive
IMAGING PERFORMANCE	
FIELD OF VIEW - LENS: (°H x °V) -	20mm : 8°x13° 35 mm : 31°x23°
DISPLAY UNIT	TFT LCD Panel 5inch HD
DETECTOR	
DETECTOR & TECHNOLOGY SPECTRAL RANGE PIXEL PITCH	IR-UNCOOLED 7 - 14 μm 17 μm
THERMAL SENSITIVITY (NETD)	< 22 mK @ 30°C
IR RESOLUTION	640 x 480 pixels
POWER	
AUTONOMY	3*3 hr.
ENVIRONMENTAL CONDITIONS FOR THE CAMERA	
HAZARD LOCATIONS CERTIFICATION	ATEX-ZONE 2 (EN 60079:2013)
EMC	EN 61326:2013
OPERATING TEMPERATURE	-10°C to +50°C
STORAGE TEMPERATURE	-40°C to +71°C
WATER AND DUST PROTECTION	IP 65 MIL-STD-810G certified (EN 60529:2018)
PHYSICAL CONDITIONS	
WEIGHT	2.1 Kg
MAX. DIMENSIONS	187*165*68 mm

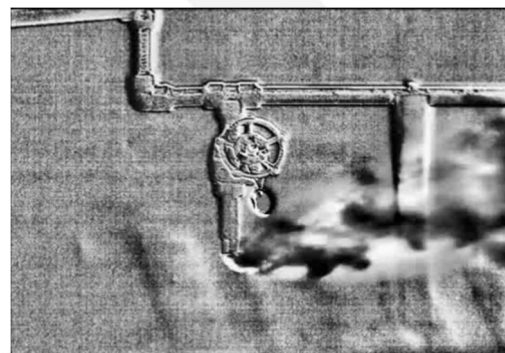
Figure 1

CH₄ gas leak.



Figure 2

CH₄ gas leak.



«We see what you can't see»



www.og-tech.fr
contact@og-tech.fr



Do not hesitate to contact your local representative: