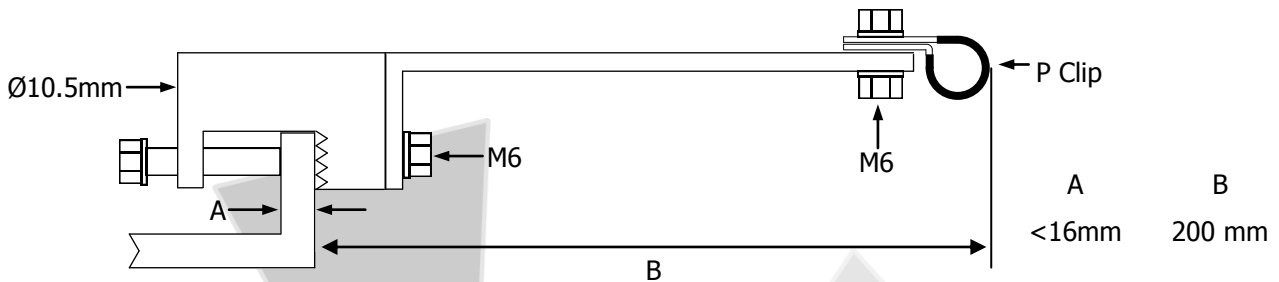


Beam Clamp and L Clip



Beam Clamp Assembly

The beam clamp assembly is suitable for use when installing Signaline Heat Sensing Cables to metal work such as on floating roof tanks or cable tray applications. It comprises of a beam clamp, an L shaped extension bar and a P Clip.

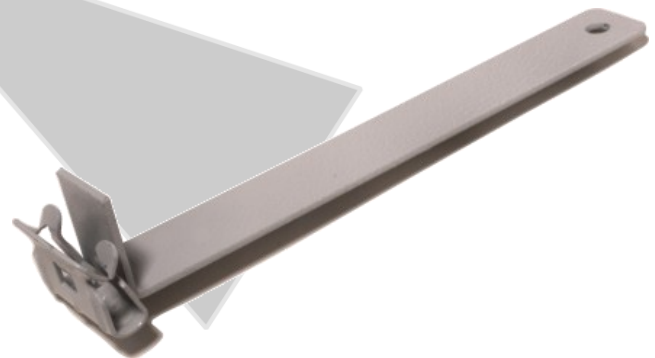


L Clip

The L Clip is an edge clip with extension arm. This arm will enable the installer to secure the Signaline cable directly over the protected area. Therefore making it ideal for cable trays and floating roof tank applications. The clip is made from a galvanised steel and comes complete with a P Clip.



Measurement A must be stated with order



LGM PRODUCTS LTD
UNIT 15 RIVERSIDE INDUSTRIAL PARK
FARNHAM
SURREY GU9 7UG
UNITED KINGDOM

TEL +44 (0) 1252 725257
FAX +44 (0) 1252 727627
E-mail sales@Lgmproducts.com
www.signaline.com